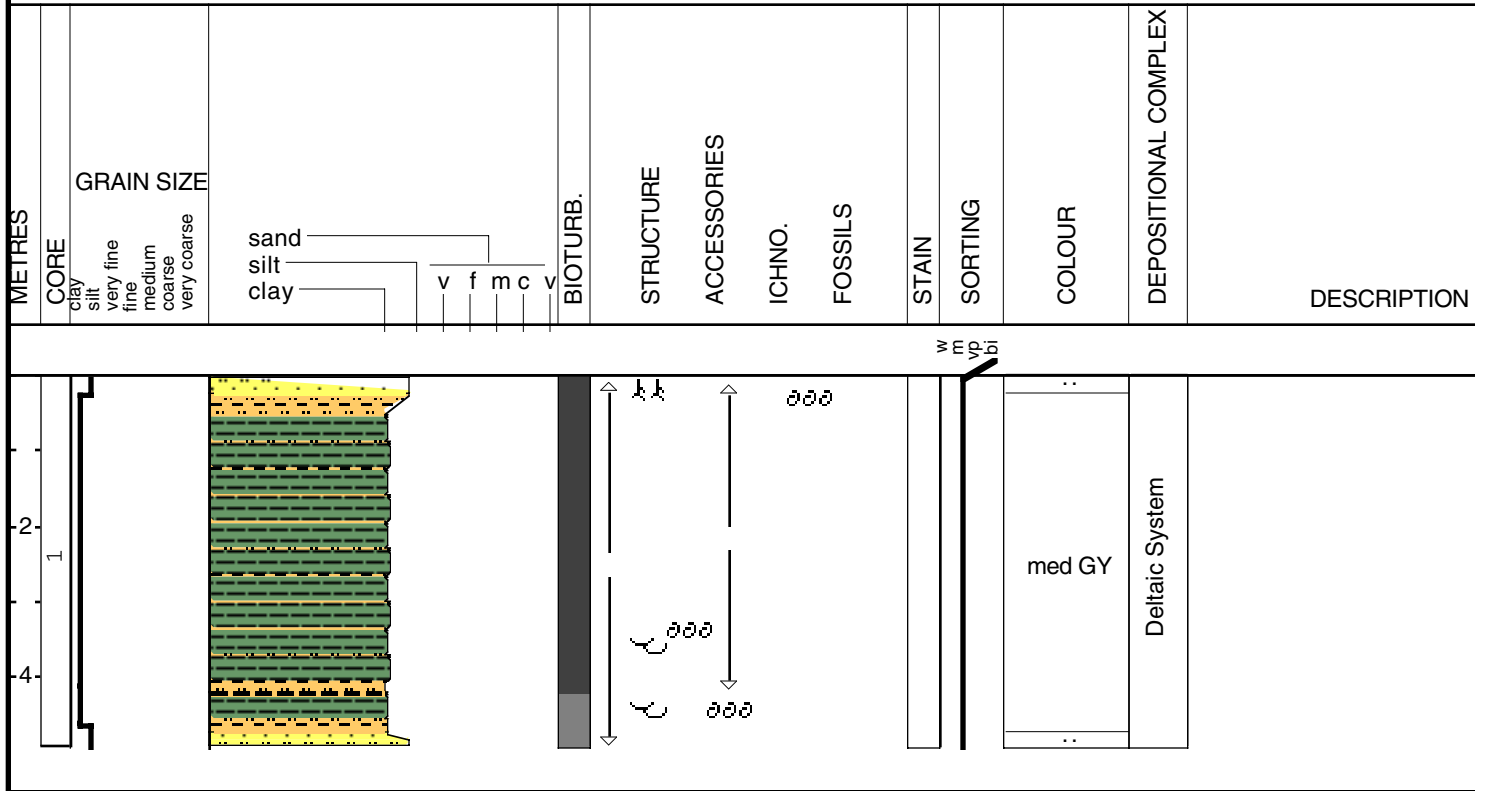


LP-95-3

Date logged: DEC. 10, 1995

Logged by: P. Connor

Ground: 4.27 m KB: 5.61 m



Core Id: LP-95-3

Elevation: 4.27m

Core Length: 4.29m

Total Depth: 5.61m

Date: 10-Dec-95

Location: South Central Lake PON

Lat: N30 05.464'

Long: W90 04.498'

Described By: P. Connor

Compaction: 69cm

0-22cm Unit A

Very soft dark gray silty clay
(mud) liquid unit. Burrowed throughout
Sm. <1 cm Rangia shell and fragments
Massive Units/bedding
Shell lag @20 cm
Subtle Base contact w/ rafted organics

% Sand:

10% fine sand
90% silty /clay

22-472cm Unit B2

Soft med. Gray silty clay
Silty sand filled burrows
Generally Massive bedding w/
faint horizontal laminations
Small shell fragment

10% Silt
90% clay

Silty sand lenses @ 315,411,485
Rangia Shell @ 332cm. Shell filled burrow 471cm.

Silty fine sand a base w/ shell frag.
Becoming stiff with depth 472-492cm UnitB3/C2?
Mod. stiff silty sand w/ hard shell

5% fine sand
20% silt
75% clay

