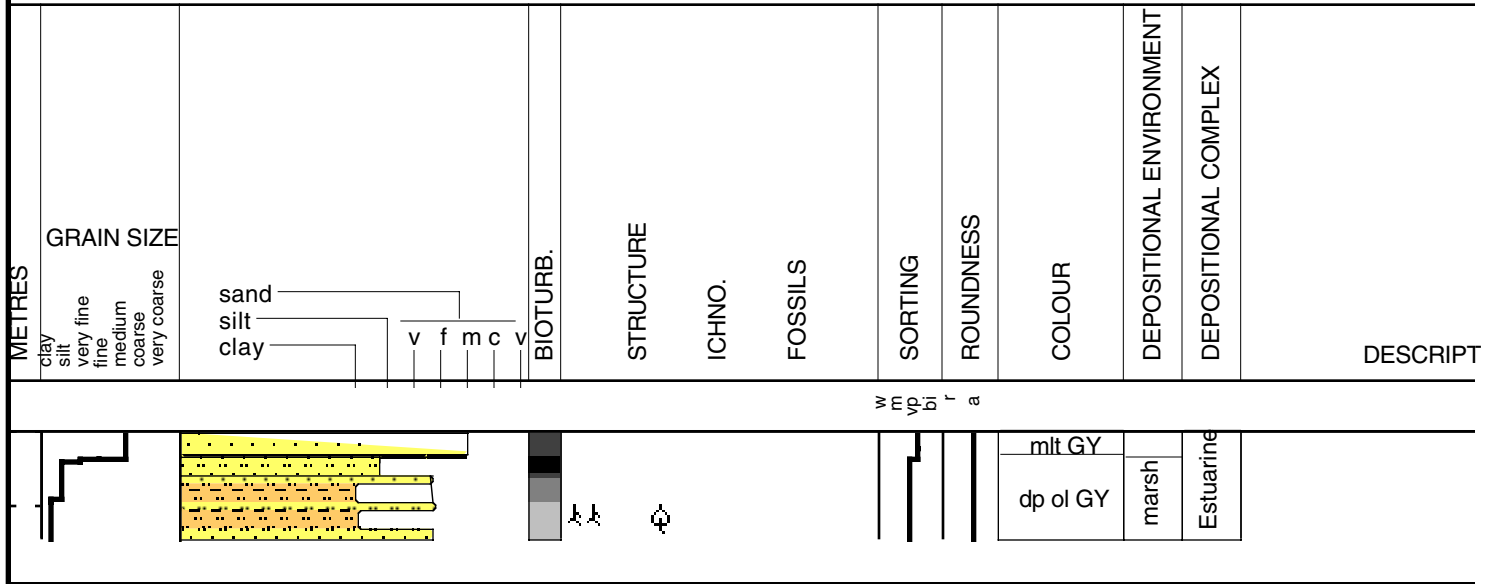


# LP-95-5

Date logged: Nov. 4, 1995  
 Logged by: P. Connor  
 Ground: 2.21 m      KB: 1.87 m



Core Id: LP-95-5	Date: Nov. 4, 1995	Described By: P. Connor
Elevation: 2.21m	Location: North Central Lake PON	
Core Length: 1.44m	Lat: N30 19.032'	Compaction: .43m
Total Depth: 1.87m	Long: W90 02.997'	

0-34cm      Unit B1	% Sand:
Shelly med. Grained sand-sub-ang.	80% sand
Poorly sorted Qtz. Sands	20% fine sands
In situ Rangia Shells	
Large Sand Filled burrows from 34-55cm	
Dewatering near top	
Sharp base contact	
Faint Horizontal laminations	
34-199cm      Unit C1	
Stiff olive gray silty clay	5% sands
Sand and silt filled burrows	10% fine sands
Oxidized organics increasing w/ depth	75% silt clay
Increasing with stiffness w/ depth	
Decreasing burrowing with Depth	
(Pleistocene)	

ION