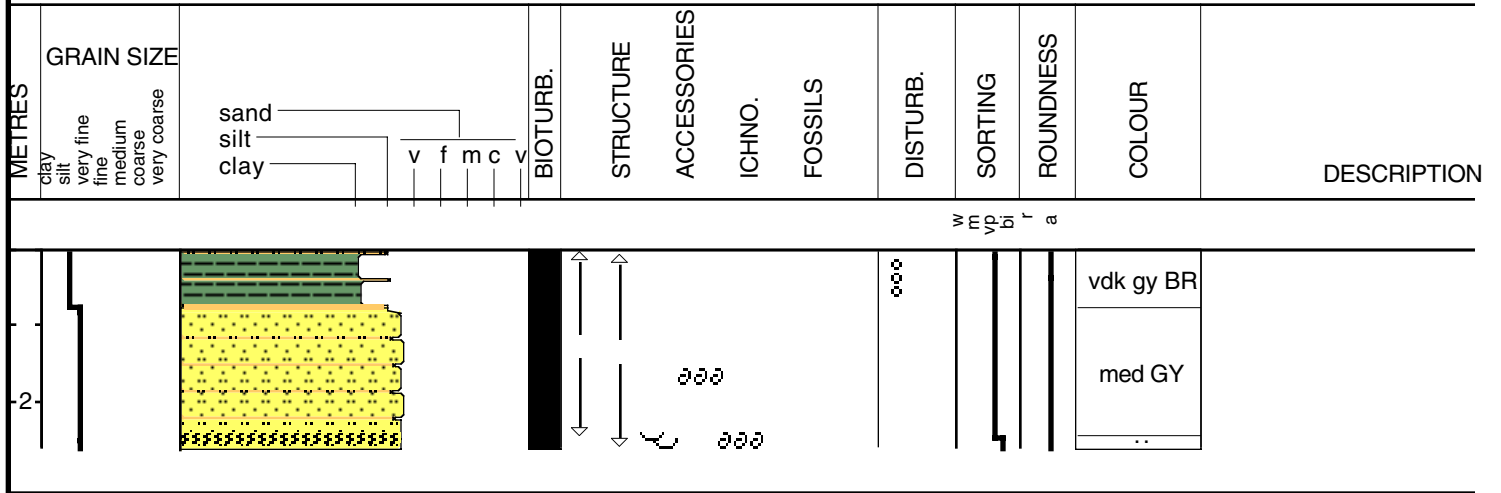


LP-95-6

Date logged: Nov. 3, 1995
 Logged by: P. Connor
 Ground: 4.09 m KB: 3.16 m



Core Id: LP-95-6	Date: Nov. 3, 1995	Described By: P. Connor
Elevation: 4.09m	Location: East Central Lake PON	
Core Length: 2.64m	Lat: N30 09.999'	Compaction: .97m
Total Depth: 3.16m	Long: W89 57.368'	

0-77cm Unit A Very soft dark grayish brown clay (Mud) Highly bioturbated and Liquid texture Silty sand filled burrows Massive and deformed bedding	% Sand: 5% silt 95% clay
77-2.51cm Unit B2 Soft M. Gray clay w/silt and sand filled burrows Massive bedding Insitu rangia shells@1.02cm Massive sand filled burrows from 77-90m Increasing Bioturbation w/ depth, some shell fragment Erosional Contact Base	10% fine sand 10 % silt 80% clay
2.51-2.64cm Unit C1 Med. Grained sand w/ silt/ clay clast Gray in color, scattered shell frag. Large bioturbation / sand lenses or storm dep. (core seismic) Pleistocene to Halocene transition Gray to olive gray in color	10-40% f.sand ~20% silt 30-10% clay

