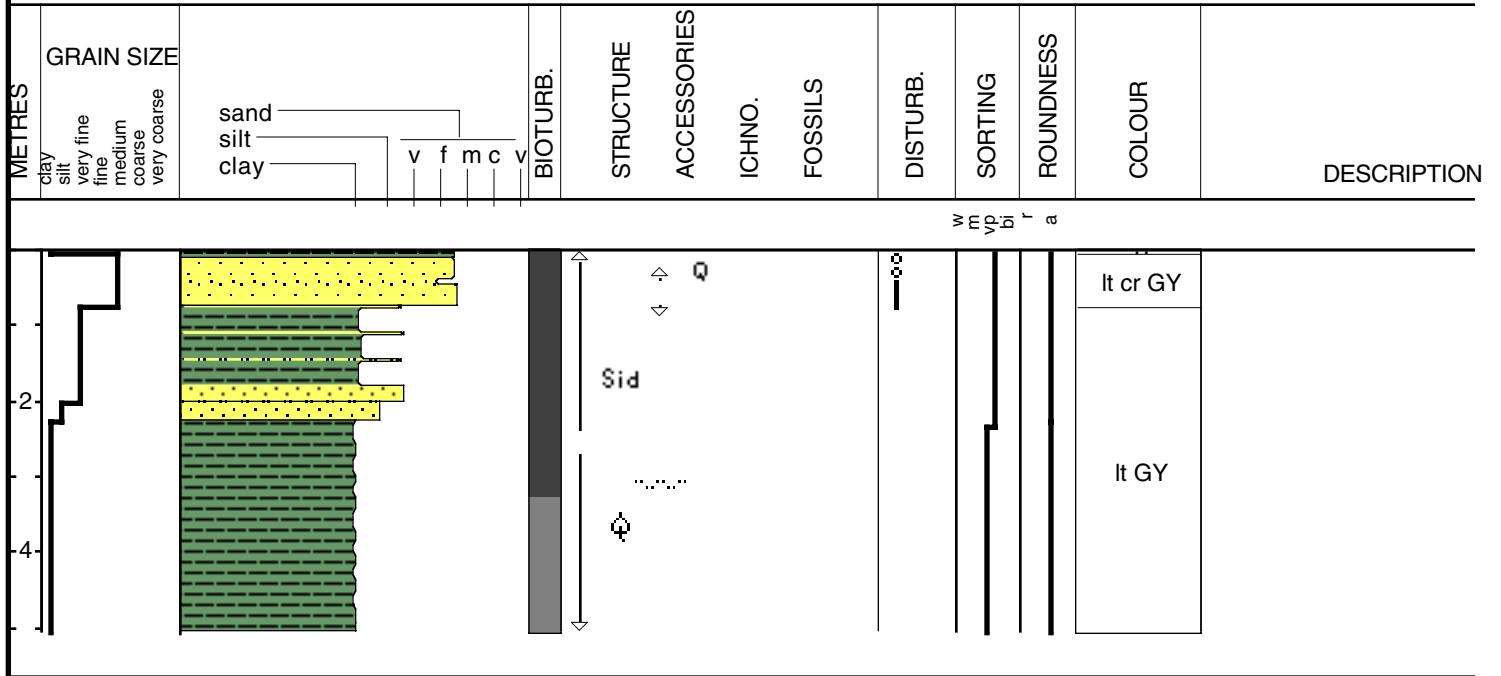


LP-95-7

Date logged: Dec. 12, 1995

Logged by: P. Connor

Ground: 3.81 m KB: 5.28 m



Core Id: LP-95-7

Elevation: 3.81m

Core Length: 5.05m

Total Depth: 5.28m

Date: Dec. 12, 1995

Location: South Central Lake PON

Lat: N30 6.042'

Long: W90 13.807'

Described By: P. Connor

Compaction: .23m

0-7cm Unit A
 Very soft silty clay w/
 sand filled burrows
 Liquefied Unit (Mud)
 Sharp based contact
 Massive bedding

% Sand:
 100% clay

7-78cm Unit B1
 Fine -med. Grain sand, sub-angular
 Poorly sorted Qtz. Sand
 Rangia shell(1-3cm)
 Faint horizontal laminations
 at top of unit but deformed at
 base by burrowing Rangia shells
 Sharp base contact

80% med sand
 20% fine sand

78-505cm Unit B2
 Soft gray w/ silty sand filled burrows
 Interbedded light dark clay bands
 Horizontal laminations sparse org.
 Large sand filled burrow at top
 of unit, but decreases with depth
 Sedorite nodule @165cm

10% fine sand/ silt
 90% clay

100% clay

* close up Photo

