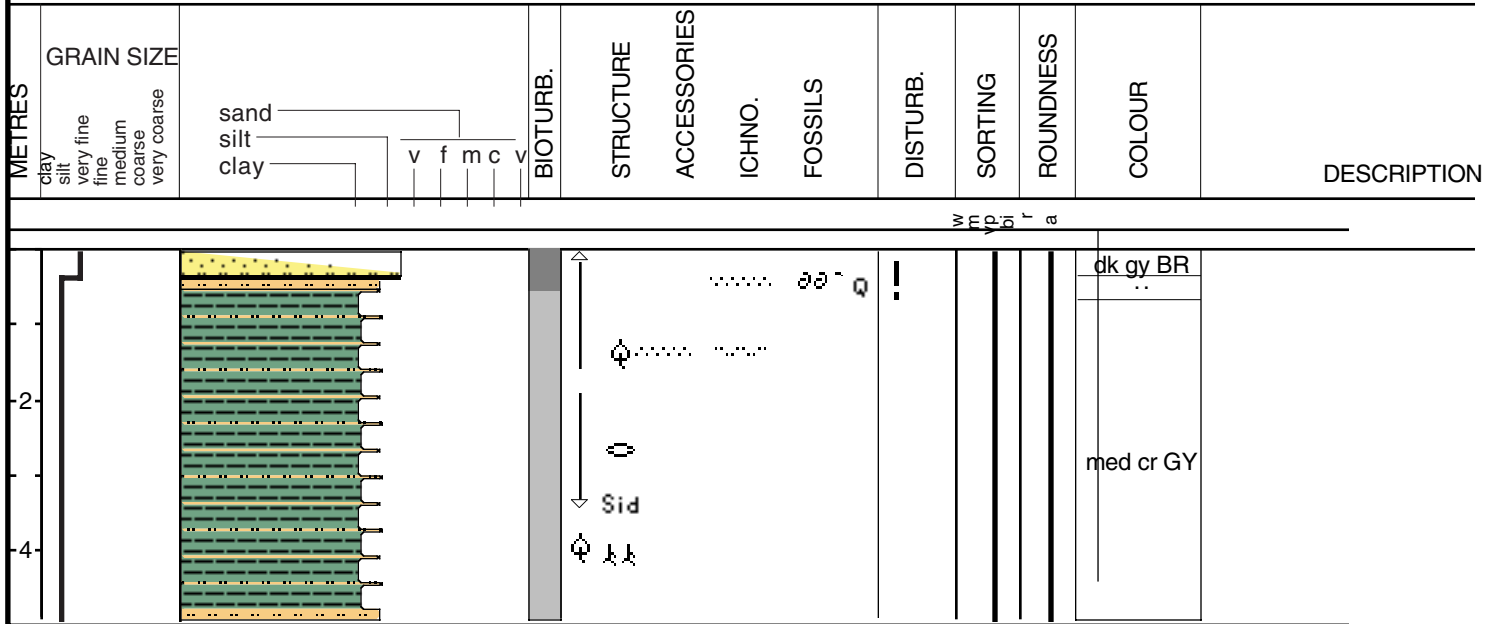


LP-95-8

Date logged: Dec. 16, 1995

Logged by: P. Connor

Ground: 3.38 m KB: 4.94 m



Core Id: LP-95-8 Date: Dec. 16, 1995 Described By: P. Connor
 Elevation: 3.38m Location: South West Lake PON
 Core Length: 4.89m Lat: N30 06.200' Compaction: .05m
 Total Depth: 4.94m Long: W90 18.012'

0-36cm Unit A % Sand:
 Very soft liquefied dark grayish brown clay (mud) 5% sand
 Massive bedding 10% silt
 Silty sand filled burrows 85% clay
 Sharp base contact
 Some signs of bioturbation
 Sm. Rangia shell and frags.
 near base unit

36-55cm Unit B1 10% silt
 Soft silty fine sand interbedded with clay and or clay clasts 90% clay
 High degree of deformation
 Shell lag @ 41cm?
 Sharp base contact
 Sands are sub angular, poorly sorted Qtz. W/ some shell frag.
 Faint laminations in sand

55-489cm Unit B2 10% silt
 Soft med. Gray clay 90% clay
 Interbedded silty sands with occasional fine sand
 Light and dark clay bands
 Horizontal laminations
 Isolated lenticular bedding
 Burrowing throughout but decreasing w/ depth
 Sand filled burrows
 Some signs of rafted organics
 Soderite Nodule @ 332cm
 Sm. Rafted organics @ 135cm