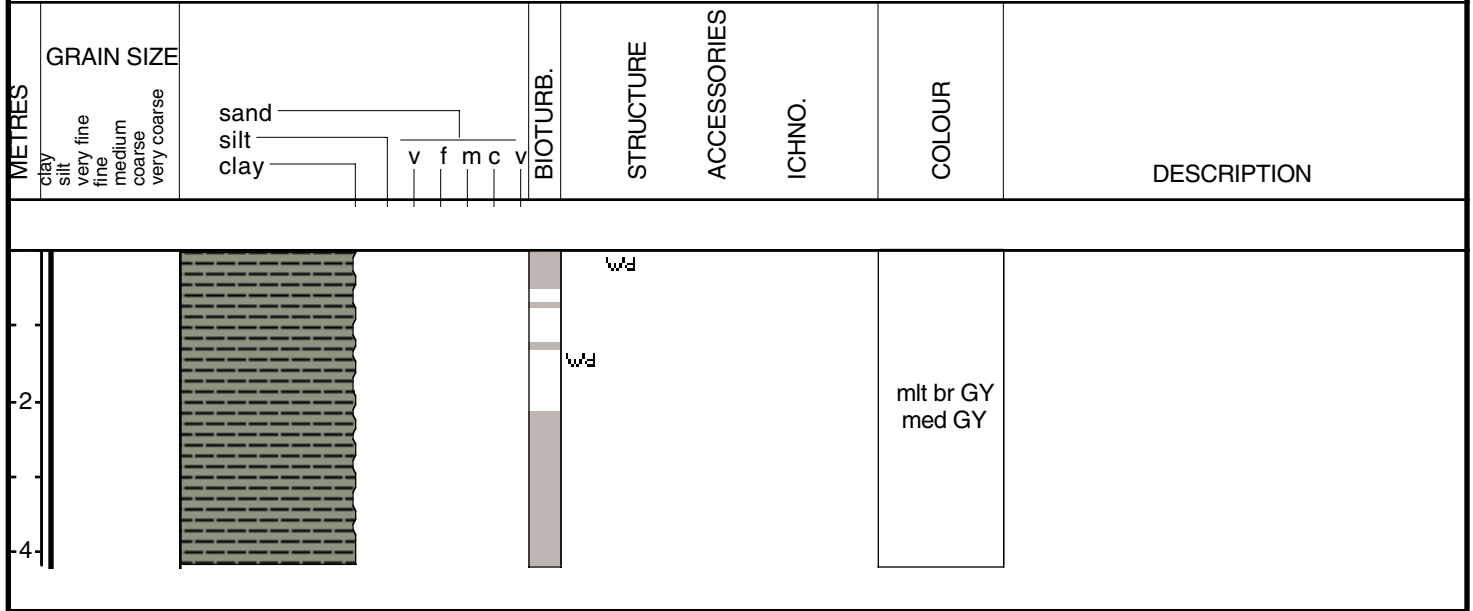


PON-97-5

Date logged: Dec. 15, 1997

Logged by: Phil Mc Carty

Ground: 0.00 m KB: 0.00 m



Core Id: PON-97-5

Elevation: 4.88m (-)

Core Length: 4.17m

Total Depth:

Date: Dec. 15, 1997

Location: South- Central Lake PON

Lat: N30 08.134'

Long: W90 8.676'

Described By: Phil Mc Carty

Compaction:

0-417cm Unit A

(Upper 10cm in plastic bag)

Very uniform core, top to bottom

Soft, medium brown clay @ top

Grades to slightly firm, med. Gray clay @ top

Some faint lamination @ 14-25cm

Rafted wood @ 15 & 140cm

Monotony broken by Rangia shells:

One large Rangia from top 10cm in bag

Some small or scattered shells and frag.

found in zones throughout Unit

Notable legs (50-70cm, 75-125cm,

131-220cm) seem completely barren of Rangia

Leg deposits of fragmented Rangia @25-28cm,

39-46cm, 227-231cm, 260-262cm.

% Sand:

100% clay