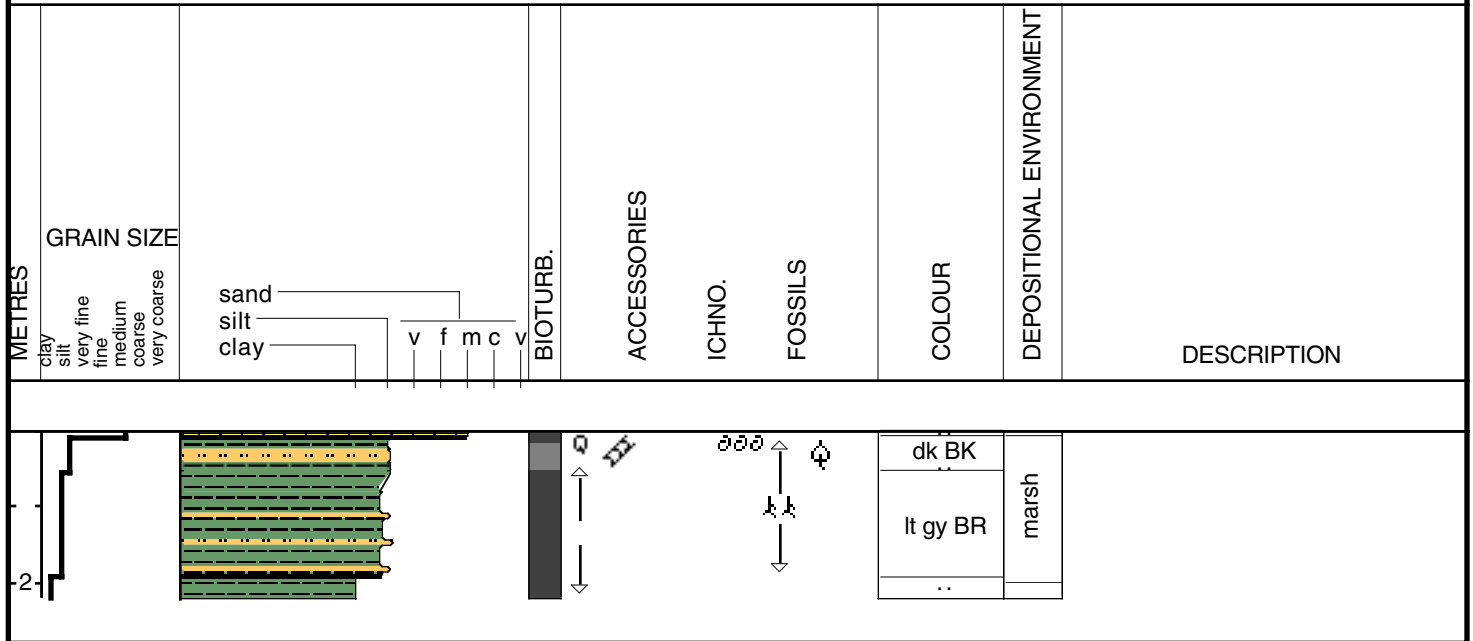


PON-97-6

Date logged: Nov. 24, 1997

Logged by: Phil Mc Carty

Ground: 0.00 m KB: 0.00 m



Core Id: PON-97-6

Elevation: 1.13m (-)

Core Length: 2.21m

Total Depth:

Date: Nov. 24, 1997

Location: North Shore Beach Public Park

Lat: N30 13.386'

Long: W89 50.152'

Described By: Phil Mc Carty

Compaction:

0-8cm

Unit A

Light green, med. Grained structureless quartz sand w/ shell lag the base
Sharp contact w/ underlying Unit
Sand filled burrows in underlying Unit
Some clay clasts from underlying unit incorporated into sand of Unit A
Light green color due to living algae

% Sand:

80% sand
10% f.sand
10% silt

8-53cm

Unit B

Dark black organic rich clay unit (marsh)
In place rooting throughout
Dark brown mud layer 18-21cm
Unit gets lighter in color and sandier base w/ sandy burrows @45-53cm
Gradational basal contact w/ underlying unit

50% silt
50% clay

53-221cm Unit C

Lt. Gray- brown, sand -mud mixture @ top unit
Progressively more clay rich towards base
Burrowed throughout w/ sandy burrows contrasting sharply w/ pure olive gray clay @ base (192-221cm)
Some coating near top, becoming a more common feature (110-125cm) w/some rooting as deep as 189cm. Roots primarily vertically oriented
Appears to be a soil horizon

25% silt
75% clay