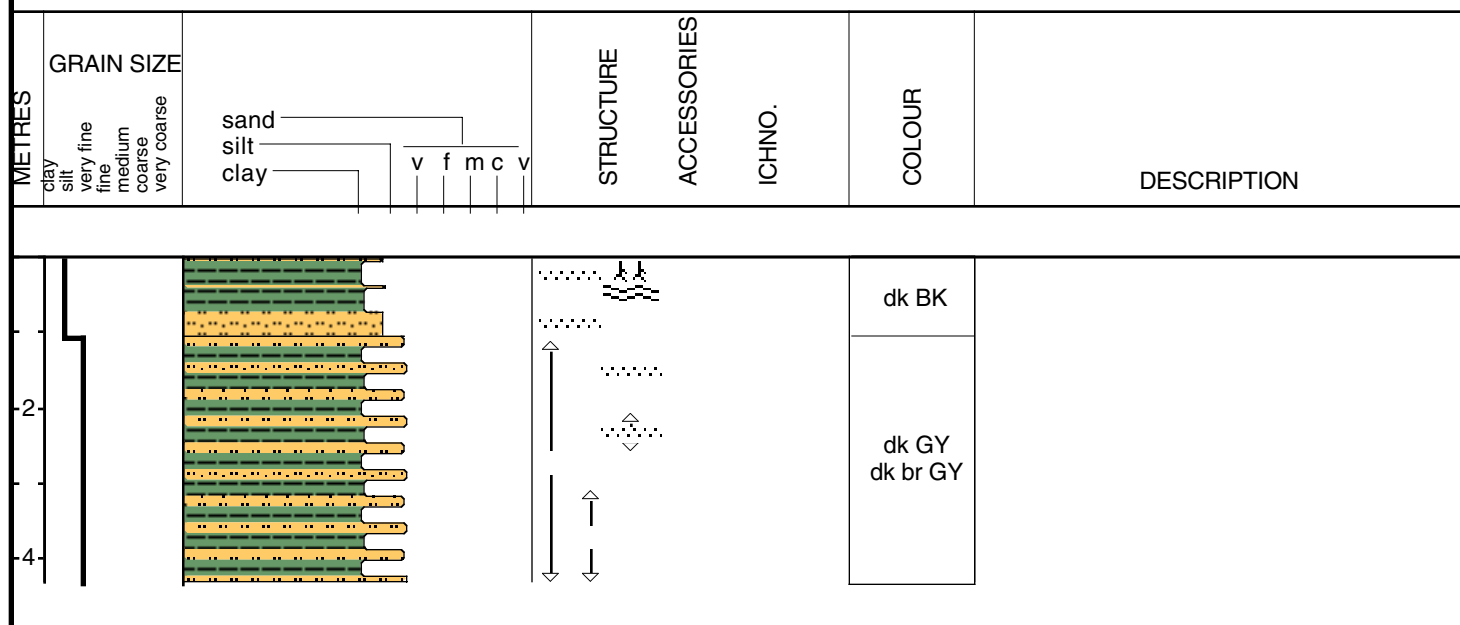


PON-97-41

Date logged: Oct. 21, 1997

Logged by: Phil Mc Carty

Ground: 0.00 m KB: 0.00 m



Core Id: PON-97-41
 Elevation: 2.44m (-)
 Core Length: 4.32m
 Total Depth:

Date: Oct. 21, 1997
 Down River Bayon Lacombe - Mid -Channel
 Lat: N30 16.274'
 Long: W89 57.284'

Described By: Phil Mc Carty

Compaction:

<p>0-105cm Unit A Dominantly dark black organic rich clay w/ organic material scattered throughout and occasional thin sandy layer Modern rooted vegetation 0-5cm Sand stringers very thin (1mm) near surface (0-48cm) Sand layers bordering on wavy bedding 48-65cm Thicker sand layers (<1cm) @ 77, 84, & 97cm Sharp contact at base w/ underlying sand unit</p>	<p>% Sand; 10% f. sand/silt 90% clay</p>
<p>105-430cm Unit B Interlayered sand and mud layers Mud is dark gray to brownish gray down to 310cm depth & medium gray to brown below 310cm Series of fining upward B1, B2, & B3 sequences B2 Thick sand bedding (@ 430-418, 205-183, & 146-126cm) Interlayered w/ only laminae and grade to excessively clay @ top of sequence (257-205, 158-148cm) and sharply cut at top by the basal grade of the next sequence up B1 Heavily burrowed below 308cm B3 Incomplete sand unit sharply discontinued and overlaid by Unit A</p>	<p>30% f. sand 10% silt 60% clay</p>