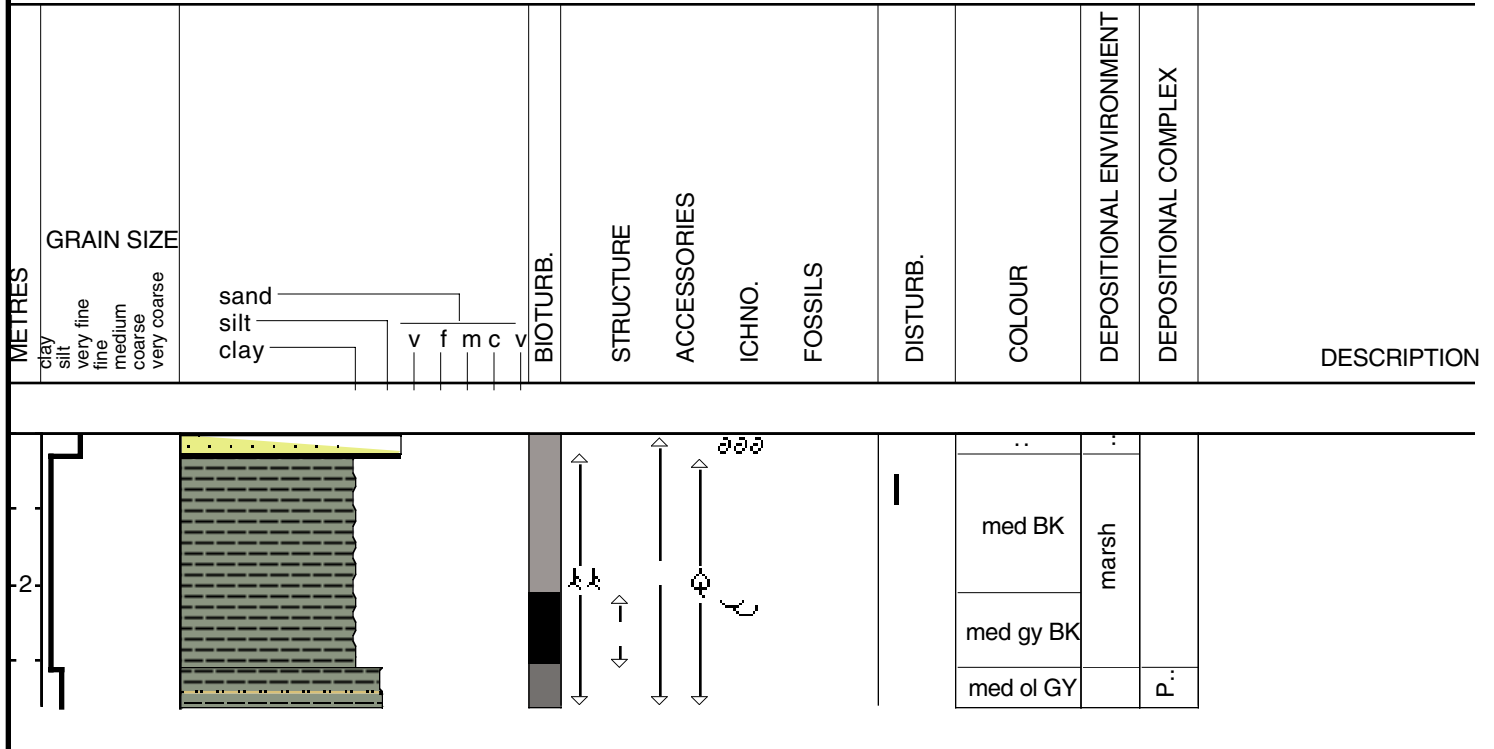


PON-97-43

Date logged: Oct. 17, 1997

Logged by: P. Connor

Ground: 2.64 m KB: 4.14 m



Core Id: PON-97-43
 Elevation: 2.64m
 Core Length: 3.62m
 Total Depth: 4.14m

Date: Oct. 17, 1997
 Location: North East Lake Point Southeast Bayou Bontouea
 Lat: N30 14.597'
 Long: W89 52.415'

Described By: P. Connor
 Compaction:

0-29cm Unit A
 Very fine silty sand w/ dominate large (.2cm) Rangia shell at top (shell lag) decreases in shell content w/ depth
 Sharp base contact firm silty, fine sand to organic clay
 Generally Massive unit w/ occasional sm. Rafted organic (rooting)

29-211cm Unit B1
 Med. Soft Black Gray clay 100% clay
 Generally horizontal laminations by f. silty sands @ bedding
 Deformation by dewatering and burrowing
 Deformed organic into clay bed @ 70-104cm
 Very small rafted organic throughout
 No signs of shell except single (<1cm) Rangia shell @ 134cm
 sign of rooting just above organic clay bed

211-310cm Unit B2
 Organic rich clay unit w/ interbedding lt. to dark clays
 Inplace rooting, Horizontal laminations
 Brackish/marsh environment.
 Faint sand lenses @ 230cm
 Large burrow @ 280-295cm
 Heavy burrowing throughout
 Very subtidal base contact
 Unit becomes stiffer w/ depth & massive
 Silty sand filled burrows from 280-310cm
 Large clay clast or bedding clast

310-362cm Unit C
 Very stiff olive gray silt clay 100% silt/clay
 Unit becomes courser with depth 275-325
 Heavy burrowing near top of unit
 Unit is Massive, Pleistocene horizontally
 Some signs of oxidized organic
 In place rooting from 356-62m