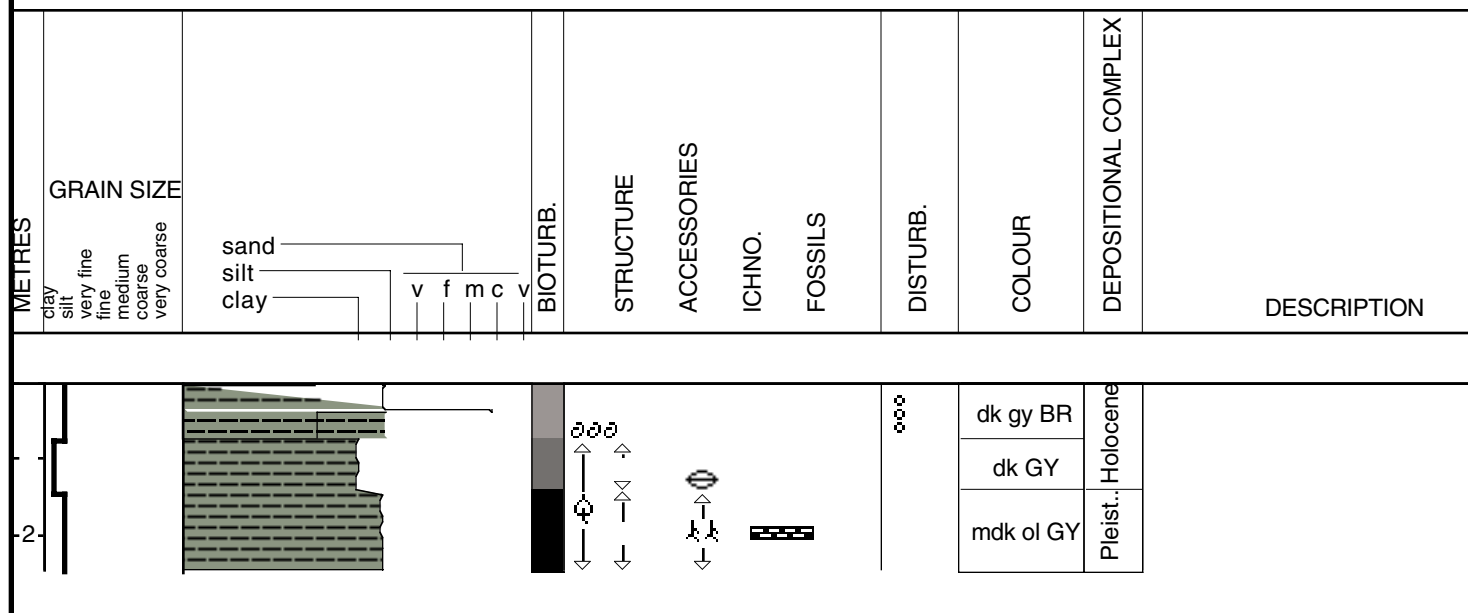


PON-97-45

Date logged: Oct. 8, 1997

Logged by: P. C. onnor

Ground: 1.20 m KB: 2.74 m



Core Id: PON-97-45
Elevation: 1.2m
Core Length: 2.47m
Total Depth: 2.76m

Date: Oct. 8, 1997
Location: North central Lake PON, S.W. of Green Pt.
Lat: N30 18.317'
Long: W90 3.477'

Described By: P. Connor
Compaction:

0-75cm Unit A Very soft dark grayish brown mud Bubbly liquid Massive unit w/ subtle base content Becomes stiff w/ shell fragments Introduction of burrows Scattered very small shell fragments	% Sand: 100% clay
75-141cm Unit B Med. Soft muddy clay dark gray in color Large Rangia shell throughout unit Oyster shells >3cm New base unit @110-135 Clay clast forms unit C @ base of contact Generally horizontal laminations w/ occasional shells(Rangia) Becomes stiff w/ depth detection pt. base contact w/ large oyster shell(3cm)	100% clay
141-242cm Unit C Stiff Olive Gray w/ oxidized mud /spots Organic rich burrows Unconformity at top of contact Very stiff w/ depth, insitu rooting Organic rich laminations (flooring) @215cm Unit is highly burrowed(micro.)	100% mud

Holocene/ Pleistocene contact @ 1.41m