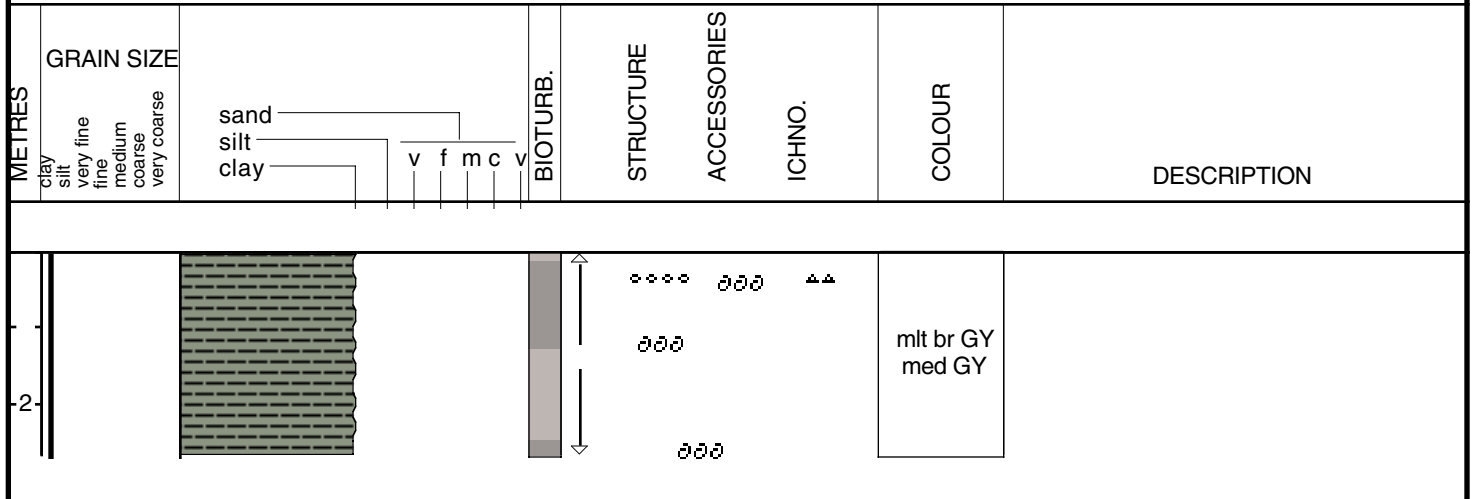


# PON-97-5a

Date logged: Dec. 23, 1997

Logged by: Phil Mc Carty

Ground: 0.00 m      KB: 0.00 m



Core Id: PON-97-5a

Date: Dec. 23, 1997

Described By: Phil Mc Carty

Elevation: 4.88m (-) Location: South -Central Lake PON

Core Length: 2.69m

Lat: N30 8.134'

Compaction:

Total Depth:

Long: W90 8.659'

0-269cm      Unit A

% Sand:

Very uniform med. Gray to med. brown clay unit

100% clay

Soft at top grading to moderately firm @ bottom

Massively bedded throughout

Very rare lone shell fragments between 60cm & 120cm

Shell lag a 2-8cm, containing very small (1mm diameter) shells to medium (1cm diameter) Rangia shells

Also contains a single round chert granule

Other shell lags @ 20-25cm, 30-39cm and 45-60cm, containing shell

fragments and rangia up to 2cm diameter

Final shell lag @ 266-269cm, containing Rangia fragments, including one large specimen that was ~5cm in diameter