

UNIVERSITY OF NEW ORLEANS

DEPARTMENT OF GEOLOGY AND GEOPHYSICS

VIBRACORE DESCRIPTION SHEET

CORE ID: BSS 00 185

DATE: 8-17-00

DESCRIBED BY: NICK

ELEVATION: -31.5 Ft

LOCATION:

CORE LENGTH: 4.91m 16.11 Ft

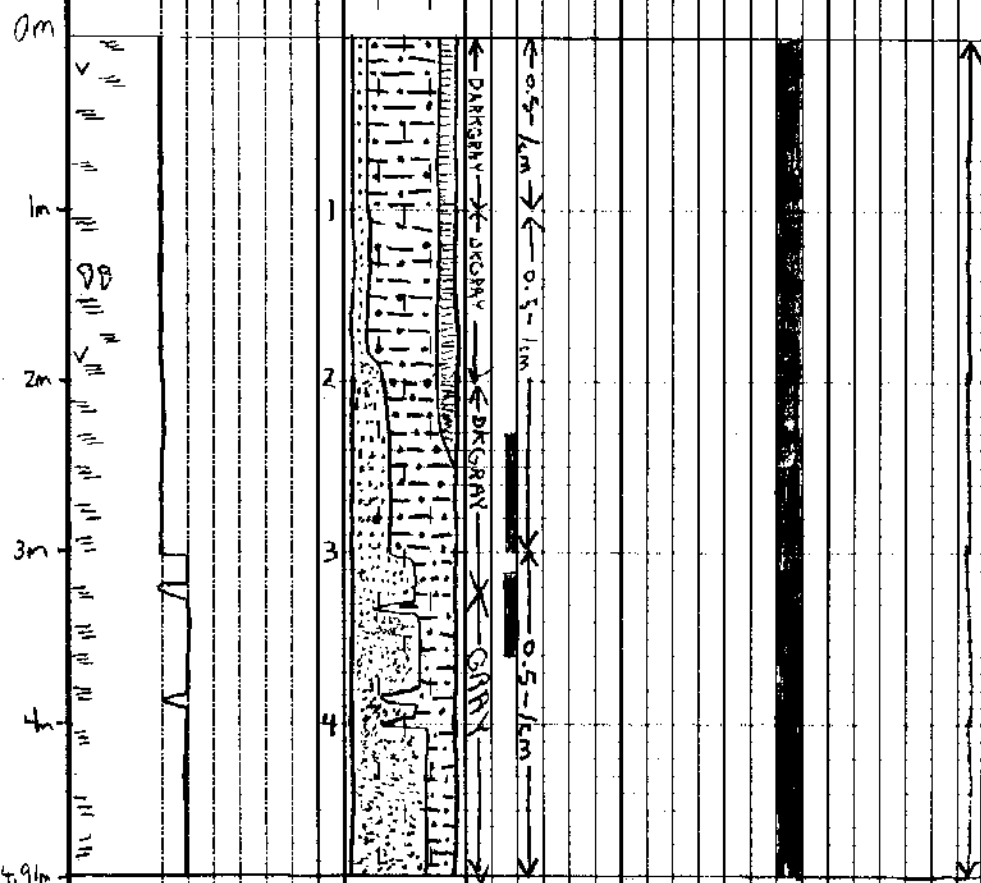
LAT/LONG: 29°14.718 89°50.811

TOTAL DEPTH: 18.03 Ft

COMPACTION: 1.926

SEDIMENTARY TEXTURE AND STRUCTURES					% SAND	PHYSICAL CHARACTERISTICS					STRATIFICATION TYPE					SAMPLE										
CLAY	SILT	FINE SAND	MEDIUM SAND	COARSE SAND		GRANULE	INTERVAL	COLOR	DEFORMATION	BED THICKNESS	% SHELL	% ORGANIC	% BIOTURBATION	WAVE	FLASER	LENTICULAR	CROSS BED	MASSIVE BED	INCLINED BED	HORIZ. LAMINATION	GRAN. SIZE	HEAVY MINERAL	MICRO FOSSILS	RADIOMETRIC	RADIOGRAPH	PHOTOGRAPH
						0																				
						50																				
						100																				

PHYSICAL DESCRIPTION



0-307cm DARK gray horizontally laminated muds w/ little or no sand content. One burrow located at 140cm. Occasional tan colored bed. No organics and only two shell fragments were noted.

307-491cm - DARK gray to gray horizontally laminated silty sands w/ some deformation. mud bands range in thickness from .5cm - 2cm. Unit fines upward w/ gradual contact. No shells, organics or bioturbation.

0-10.07 FE CL
10.07-16.11 FE SM